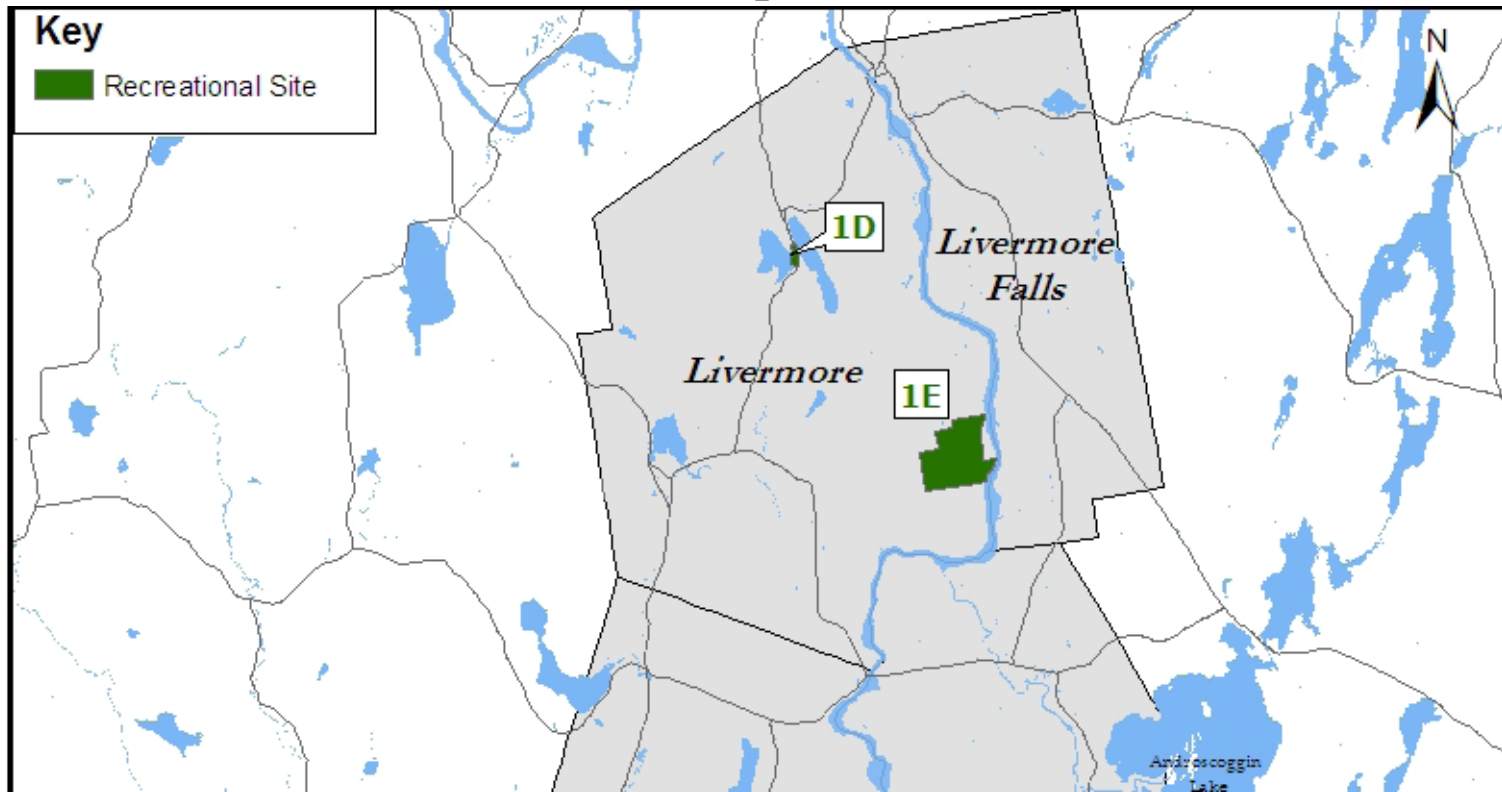
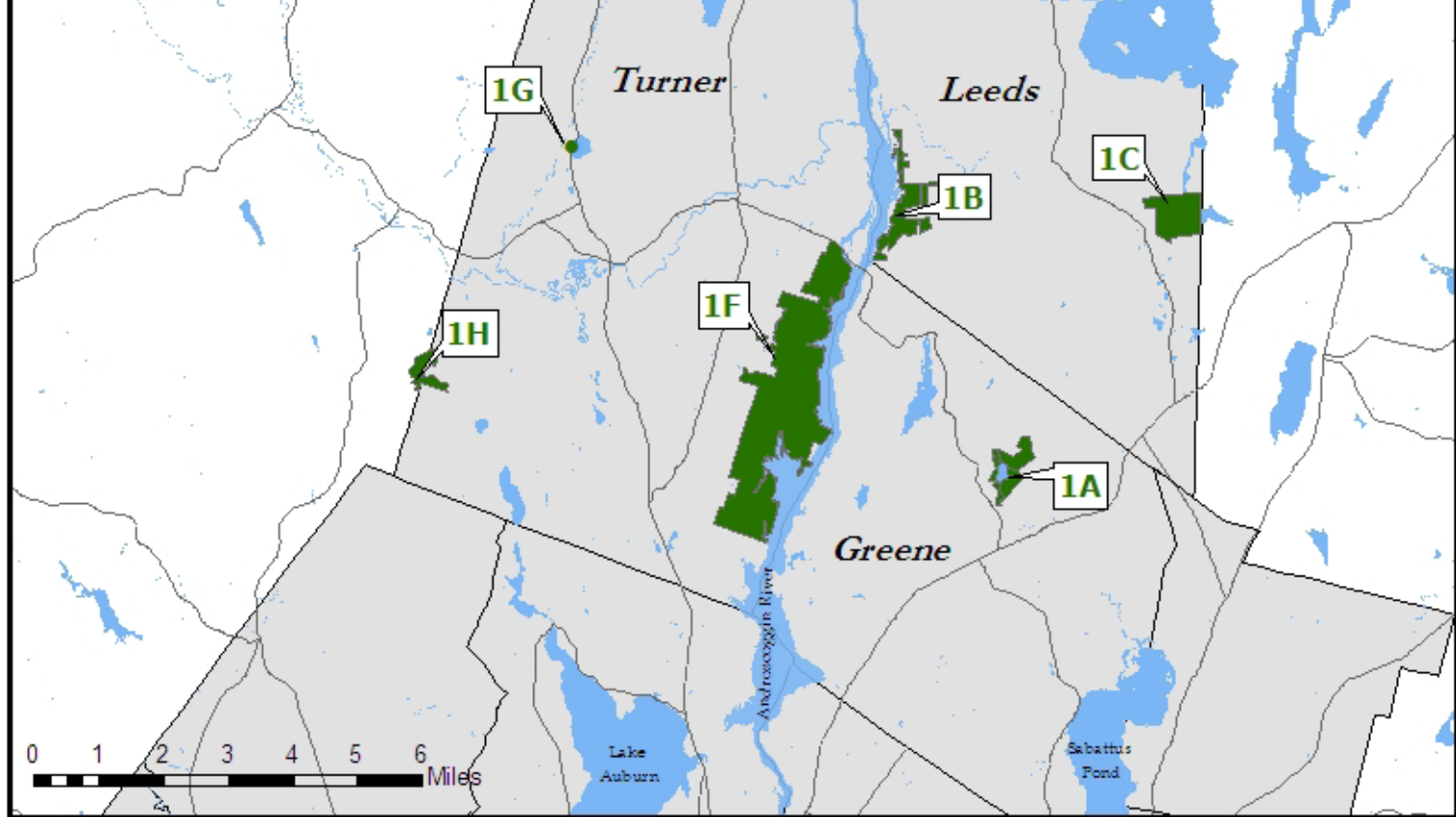


# Outdoor Recreation in Androscoggin County

*Greene, Leeds, Livermore, Livermore Falls and Turner*

## Map 1





See next page for descriptions of above recreational sites.

*Map produced by the Androscoggin Land Trust 2007*

## MAP 1

# GREENE, LEEDS, LIVERMORE, LIVERMORE FALLS AND TURNER

## Greene 1A

*Name:* **Hooper Pond Preserve**

*Directions:* From Lewiston-Auburn, take Route 202 north to Greene. Turn left at Allen Pond Road (flashing yellow light). Right onto Hooper Pond Road. Entrance/parking is approximately .25 mile on right.

*Activities:* Non-motorized boat launch, canoeing, kayaking, hiking, cross-country skiing, snowshoeing, and nature observation

*Size:* 195 acres

*Contact:* Androscoggin Land Trust; [www.androscogginlandtrust.org](http://www.androscogginlandtrust.org)

*Phone:* (207) 782-2302

## Leeds 1B

*Name:* **Androscoggin Riverlands State Park – Leeds Section**

*Directions:* The only access to this site is by boat from the Androscoggin River. (See 1F next page)

*Activities:* Canoeing, kayaking, multi-use trail, hiking, cross-country skiing, snowshoeing, horseback riding, dog walking (on leash), biking, and nature observation

*Size:* 336 acres

*Contact:* Maine Department of Conservation

*Phone:* (207) 287-3821

## 1C

*Name:* **Curtis Homestead Conservation Area**

*Directions:* From Route 202 in Monmouth, go west on the Bog Road. The parking area has a sign and is about 1.5 miles on the right.

*Activities:* Hiking

*Size:* 360 acres

*Contact:* Kennebec Land Trust

*Phone:* (207) 933-2220

## Livermore 1D

*Name:* **Round and Long Ponds**

*Directions:* On Route 4 in North Livermore.

*Activities:* Boat launch, canoeing, kayaking, swimming, fishing, and nature observation  
*Size:* 20 acres

*Contact:* Maine Department of Inland Fisheries and Wildlife

*Phone:* (207) 287-8000

## 1E

*Name:* **Tolla Wolla**

*Directions:* From Livermore, take Route 4 north to North Livermore. Just north of Long Pond and Round Pond, turn right onto Robinson Road. Turn right onto River Road. Angle to left onto Maple Lane. Follow Maple Lane, becoming Tolla Wolla Road, which runs along the eastern side of property.

*Activities:* Fishing (no boat launch) and nature observation

*Size:* 477 acres

*Contact:* Maine Department of Inland Fisheries and Wildlife

*Phone:* (207) 287-8000

## Turner

### 1F

*Name:* **Androscoggin Riverlands State Park – Turner Section**

*Directions:* From Route 4 in Turner, take Route 117 east about 2 miles, turning right at a fork just before a 4-way intersection. Continue straight past the store onto Center Bridge Road and proceed another 2 miles to the parking lot on the right. The property is also accessible by water from the public boat landing .33 mile beyond the parking lot.

*Activities:* Canoeing, kayaking, multi-use trail, hiking, cross-country skiing, snowshoeing, horseback riding, dog walking (on leash), biking, and nature observation

*Size:* 1,909 acres

*Contact:* Maine Department of Conservation

*Phone:* (207) 287-3821

### 1G

*Name:* **Crystal (Beals) Pond Boat Launch**

*Directions:* On Route 4 north of Turner Center approximately 1.75 miles.

*Activities:* Boat launch, canoeing, kayaking, and fishing

*Size:* 47 acres

*Contact:* Maine Department of Inland Fisheries and Wildlife

*Phone:* (207) 287-8000

### 1H

*Name:* **Keene-Whitman Memorial Forest**

*Directions:* Starting in Turner at the intersection of Route 4 and Route 117 travel west on Route 117 for 2.5 miles to the East Hebron Road. Turn left on the East Hebron Road and follow it south for 2 miles to the forest. The forest is on both sides of the road.

*Activities:* Nature observation

*Size:* 100 acres

*Contact:* New England Forestry Foundation (NEFF) – conservation easement co-held by Androscoggin Land Trust (ALT) and Lake Auburn Watershed Protection Council

*Phone:* (978) 952-6856 (NEFF); (207) 782-2302 (ALT)

# Additional Recreational Opportunities

## GREENE, LEEDS, LIVERMORE, LIVERMORE FALLS AND TURNER

### Greene Community Organizations

*Name:* **Greene Recreation Department**

*Location:* Greene Town Office

*Activities:* Offers most sports during all seasons with the exception of football

*Phone:* 946-5146

### Other Interests

*Name:* **Mary Jane's School of Dance**

*Location:* 461 Route 202

*Activities:* Tap, jazz, ballet, acrobats for children. Tap and jazzercise classes for adults. Preschool classes available.

*Phone:* 946-7302

*Name:* **Saddlesore Ranch and Riding Stable**

*Location:* 21 Gun Lane

*Activities:* Scenic trail rides, lessons

*Phone:* 946-2338

### Leeds Community Organizations

*Name:* **Leeds Athletic Association**

*Location:* 1273 Route 106

*Activities:* Soccer, baseball, softball, basketball, cheering

*Phone:* 524-5171

*Name:* **Leeds Recreation Committee**

*Location:* 1273 Route 106

*Activities:* Swimming lessons at Leeds town beach (residents only)

*Phone:* 524-5171

### Other Interests

*Name:* **Springbrook Golf Club**

*Location:* 141 Route 202

*Activities:* 18-hole golf course, driving range

*Phone:* 946-5900; [www.springbrookgolfclub.com](http://www.springbrookgolfclub.com)



Photo courtesy of Androscoggin Land Trust

## **Livermore Community Organizations**

*Name:* **Area Youth Sports**

*Location:* Various sites in Livermore, Livermore Falls, Fayette, and Jay

*Activities:* Baseball, cheering, football, basketball, softball, tee-ball, soccer and field hockey

*Phone:* [www.ayssports.org](http://www.ayssports.org)

### **Other Interests**

*Name:* **Maple Lane Golf**

*Location:* 295 Maple Lane

*Activities:* 9-hole golf course, ice-skating, and cross-country skiing on site in the winter

*Phone:* 897-6666

## **Livermore Falls Community Organizations**

*Name:* **Learning Opportunities Center**

*Location:* 19 Main Street

*Activities:* Line Dancing

*Phone:* 897-6384



Photo courtesy of Androscoggin Land Trust

**Name: Livermore Falls Parks and Recreation Department**

*Location:* 2 Main Street

*Activities:* Various activities including field hockey clinics, baseball and soccer games, and other children's games

*Phone:* 897-3321

## **Other Interests**

**Name: Fitness Stylz**

*Location:* 17 Depot Street

*Activities:* Group fitness classes, cardio equipment, weight equipment, massage therapy, yoga classes, personal trainers

*Phone:* 897-5978; [www.fitnessstylz.com](http://www.fitnessstylz.com)

## **Turner Community Organizations**

**Name: Leavitt Area High School**

*Location:* 21 Matthews Way

*Activities:* Walking, running, and weight room

*Size:* .25 mile track

*Website:* [www.msad52.org](http://www.msad52.org)

**Name: Turner Athletic Association**

*Location:* varies

*Activities:* Sports program

*Phone:* 225-3788; [www.turnermaine.com/taa.html](http://www.turnermaine.com/taa.html)

**Name: Turner River Valley Adult and Community Education**

**Location:** 486 Turner Center Road

**Activities:** Yoga, t'ai chi, Pilates, and educational classes such as group exercises with aerobics, karate aerobics, weight lifting, and flexibility. Weight room available at Leavitt Area High School. Gyms of Greene Central School, Leeds Central School or Leavitt Area High School available for walking routes  
6:30 am – 7:30 am.

**Phone:** 225-3478; [www.msad52.org](http://www.msad52.org)

### **On Your Own**

**Name: Androscoggin River Trail**

**Location and Directions:** Bear right onto Upper Street – 4 miles from the Auburn town line. Take Upper Street to Turner Center. At the crossroads, turn right onto Center Bridge Road, Cobb Road will be on the left. Look to the right for a dirt road that leads to a parking lot for trail users.

**Activities:** Mountain biking, running, walking, and hiking

**Size:** 18 miles out and back or 15-mile loop.

### **Other Interests**

**Name: Turner Highlands Country Club**

**Location:** 10B Highland Avenue

**Activities:** Challenging 18-hole championship golf course

**Phone:** 224-7060; [www.turnerhighlands.com](http://www.turnerhighlands.com)

